



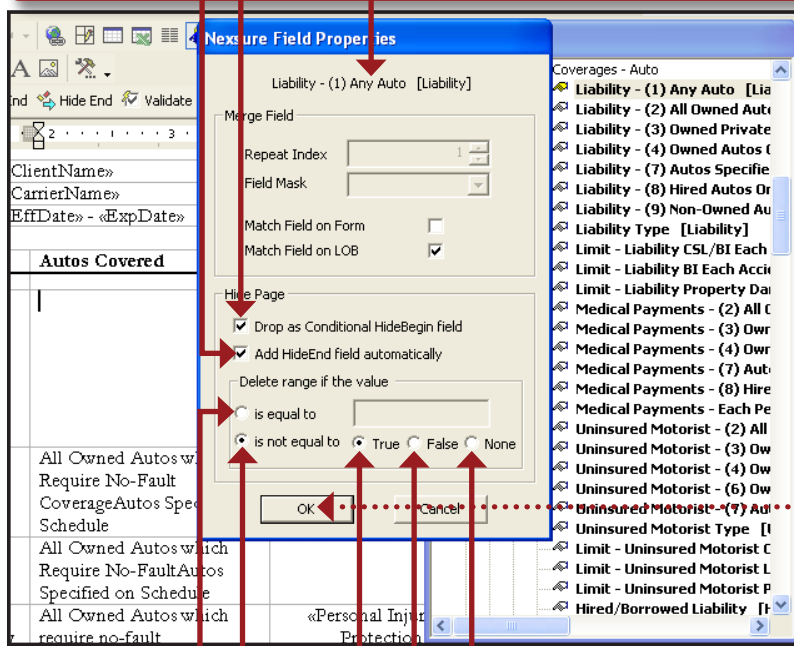
IN THIS ISSUE

- ✖ Using the Hide Begin In Place of IF Statements

Using the Hide Begin In Place of IF Statements

In most cases a <<HideBegin>> and <<HideEnd>> will be used instead of an **IF** statement (For more information, see **Office Integration Setup** in Chapter 8 of the Nexsure® ADMIN Training Manual). Here are some examples of using <<HideBegin>> and <<HideEnd>> where previously an **IF** statement would have been used:

1. To return the words **Any Auto**, use the **Hide Page** check boxes from the **Nexsure Field Properties** pop-up box. Click the **Drop as Conditional HideBegin** field and notice the **Add HideEnd field automatically** is checked as well. Leave the **Add HideEnd field automatically** box checked to have the <<HideEnd>> field placed in the document with the <<HideBegin>> field.



2. To translate a true/false answer to a more meaningful response, select the **True**, **False** or **None** options with the <<HideBegin>> equal to or not equal to. Nexsure automatically selects **is equal to** or (in this case) **is not equal to** by the selection of the data field type. **True** means the field is not blank or a yes answer on the form. **False** means the field is blank or is a no answer on the form. **None** means the field is blank.

3. Click the **OK** button to insert the <<HideBegin>> and <<HideEnd>> fields.



4. Place the cursor between the <<HideBegin>> and <<HideEnd>> fields.

Coverage	Autos Covered	
Liability Insurance	<<HideBegin>><<HideEnd>>	

5. Enter the text (**Any Auto**) and any formatting necessary such as a **carriage return** ¶ as shown. If the field result is **True**, then the text will not return. If the field is not equal to **True**, the text will be returned when the document is merged.

Coverage	Autos Covered	
Liability Insurance	<<HideBegin>>Any Auto¶ <<HideEnd>>	



6. Repeat steps 1 through 5 to add more <<HideBegin>> and <<HideEnd>> fields as necessary.

Named Insured:	«ClientName»		
Carrier:	«CarrierName»		
Policy Term:	«EffDate» - «ExpDate»		
Coverage	Autos Covered	Limits of Liability	
Liability Insurance	«HideBegin»Any Auto «HideEnd»«HideBegin»All Owned Autos «HideEnd» «HideBegin»Owned Private Passenger «HideEnd» «HideBegin»Owned Autos Other than Private Passenger «HideEnd»«HideBegin»Aut os Specified on Schedule «HideEnd»«HideBegin»Hire d Autos «HideEnd»«HideBegin»Non -Owned Autos«HideEnd»	«Limit - Liability CSL/BI Each Person» «Limit - Liability BI Each Accident» «Limit - Liability Property Damage»	BI Each Person BI Ea Accident Property Damage

Note: When using the **Hide Begin** statement, remember that if the result is true, **Hide Begin**, **Hide End** and any text in-between will be removed when the document is merged. In the examples above, if the fields are not equal to true, the text will be removed from the document.